



 Silverstone

SILVERSTONE

Silverstone

Silverstone

Conference & Gala dinner venue

Areas proposed

- Hall 5 (Thursday)- Main plenary – up to 500 theatre style, 320 cabaret style or 400 for a dinner.
- Hall 3 (Friday) – Main plenary & dinner – up to 1,000 theatre style, 480 cabaret style or 600 for a dinner.

Hall 3 includes a large mezzanine floor which can hold up to 230 guests and works well for arrival teas/coffees/ drinks receptions, registration, breakout space or cloakroom.

- Hall 2 – Catering & Expo – up to 750 theatre style or 400 Cabaret style.

Hall 2 also includes a mezzanine floor which can hold up to 230 delegates. We would allocate Hall as a separate catering area where we would serve teas, coffees and a bowl food lunch.

- Breakout rooms (50/60 theatre style) – IMC 1, IMC2, IMC3, IMC4, Auditorium, Race Admin 1, Race Admin 2, Hall 1 Mezzanine, Hall 5

Location

Silverstone Circuit Silverstone Towcester, NN12 8TN
1-hour drive from Birmingham

Hotels – 5 minutes walk

Hilton Garden Inn
Escapde

Availability

Thursday 1st – Friday 2nd May 2025 – second option



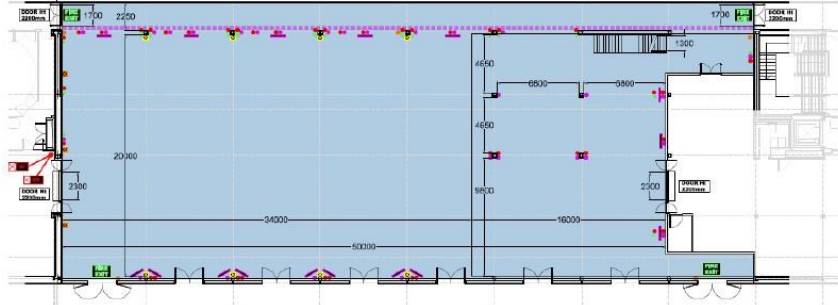


Inchcape UK

STARS AWARDS 2023

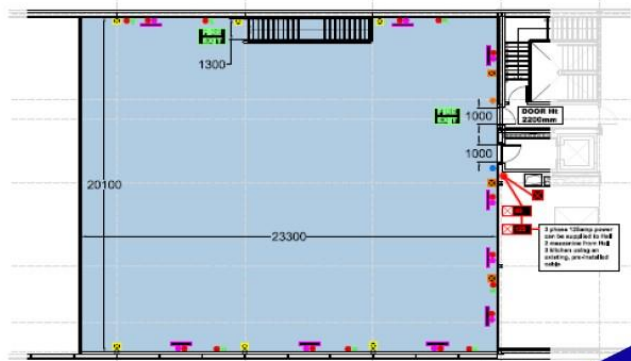


Silverstone



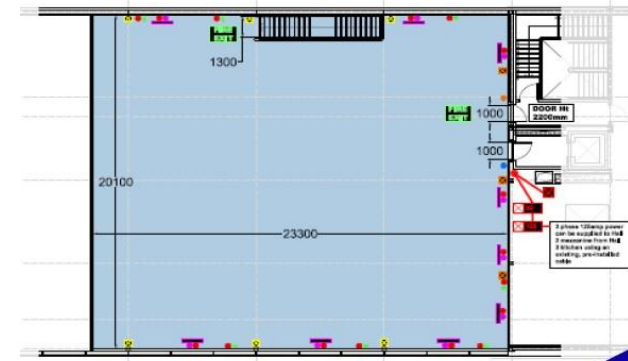
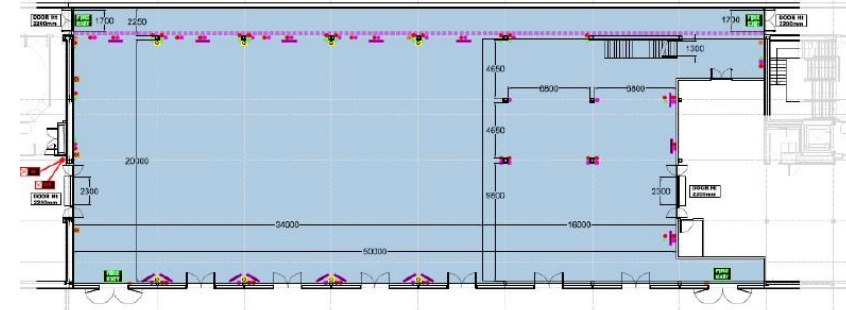
HALL 3
Floor plans

Main hall	
Area	1050M ²
Ceiling height	8M
Mezzanine	
Area	455M ²
Ceiling height	2.4M



HALL 2
Floor plans

Main hall	
Area	1050M ²
Ceiling height	8M
Mezzanine	
Area	455M ²
Ceiling height	2.4M



**INTERNATIONAL
MEDIA CENTRE**
Floor plans

IMC1	IMC2	IMC3	
10.8 x 19.5	14.7 x 19.5	14 x 19.5	Dimensions (M)
210M ²	286M ²	273M ²	Area
3.4	3.4	3.4	Ceiling height

